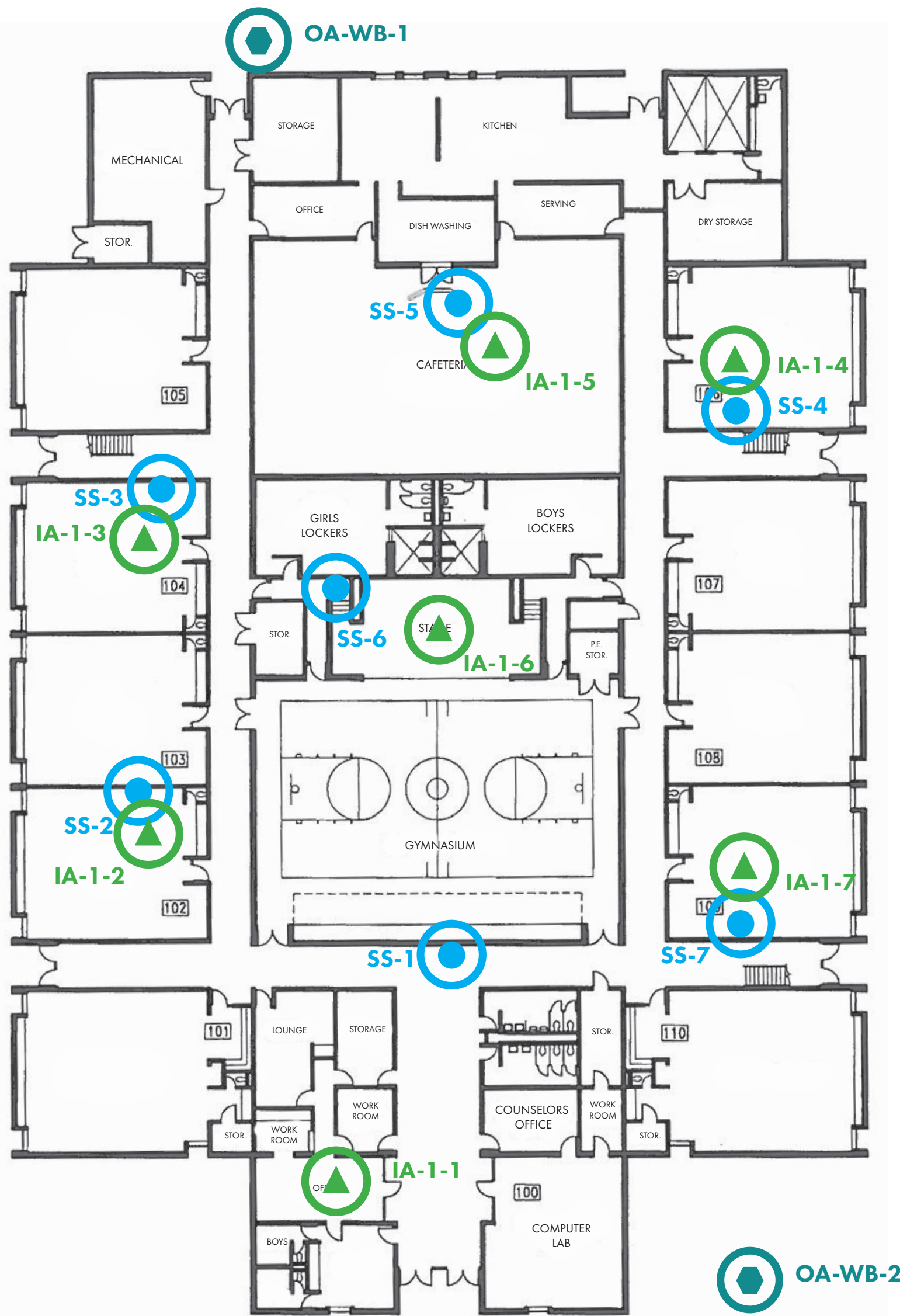


VAPOR INTRUSION RESULTS

WEBB 1st Floor



WEBB 2nd Floor



INDOOR AIR RESULTS

Sample Address	Sample Identification	Sample Location	Applicable Criteria	March 23 - 8 Hour		March 24-25 - 24 Hour	
				VOCs (µg/m ³)		VOCs (µg/m ³)	
				PCE (µg/m ³)	TCE (µg/m ³)	PCE (µg/m ³)	TCE (µg/m ³)
INDOOR AIR SAMPLES							
Residential Indoor Air Screening Level				42	2.1	42	2.1
Commercial Indoor Air Screening Level				180	8.8	180	8.8
Webb 1400 Webb Court	IA-1-1	First Floor	Residential	<0.68	<0.54	<0.68	<0.54
	IA-1-2			<0.68	<0.54	<0.68	<0.54
	IA-1-3			<0.68	<0.54	<0.68	<0.54
	DUP-WB-1 (IA-1-3)			<0.68	<0.54	<0.68	<0.54
	DUP-WB-2 (IA-1-3)			<0.68	<0.54	<0.68	<0.54
	IA-1-4			<0.68	<0.54	<0.68	<0.54
	IA-1-5			<0.68	<0.54	<0.68	<0.54
	IA-1-6	<0.68		<0.54	<0.68	<0.54	
	IA-1-7	<0.68		<0.54	<0.68	<0.54	
	IA-2-1	Second Floor		<0.68	<0.54	<0.68	<0.54
	IA-2-2			<0.68	<0.54	<0.68	<0.54
	IA-2-3			<0.68	<0.54	<0.68	<0.54
	IA-2-4			<0.68	<0.54	<0.68	<0.54
	IA-2-5			<0.68	<0.54	<0.68	<0.54

OUTDOOR AIR RESULTS

Sample Address	Sample Identification	Sample Location	Applicable Criteria	VI Assessment	VOCs (µg/m ³)	
					Tetrachloroethene	Trichloroethene
OUTDOOR AIR SAMPLES						
Outdoor Air	OA-WB-1	Outside	Not Applicable	8 hour (March 23)	<0.68	<0.54
	OA-WB-2				24 hour (March 24)	<0.68

SUB-SLAB RESULTS

Sample Address	Sample Identification	Applicable Criteria	August 2018		March 9, 2019		March 25, 2019	
			VOCs (µg/m ³)		VOCs (µg/m ³)		VOCs (µg/m ³)	
			PCE (µg/m ³)	TCE (µg/m ³)	PCE (µg/m ³)	TCE (µg/m ³)	PCE (µg/m ³)	TCE (µg/m ³)
SUB-SLAB VAPOR SAMPLES								
Residential Sub-Slab Vapor Screening Levels			1,400	70	1,400	70	1,400	70
Commercial Sub-Slab Vapor Screening Levels			6,000	290	6,000	290	6,000	290
Webb 1400 Webb Court	SS-1	Residential	<3.19	1.24	365	28.5	<3.19	97.8
	SS-2		4.41	1.67	119	242	<3.19	<10.7
	SS-3		4.61	<1.07	186	849	<3.19	<10.7
	SS-4		3.32	1.34	408	<10.7	<3.19	<10.7
	SS-5		12.9	<1.07	235	<10.7	114	<10.7
	SS-6		<3.19	54.5	118	225	165	105
	SS-7		<3.19	<1.07	209	<10.7	<3.19	<10.7